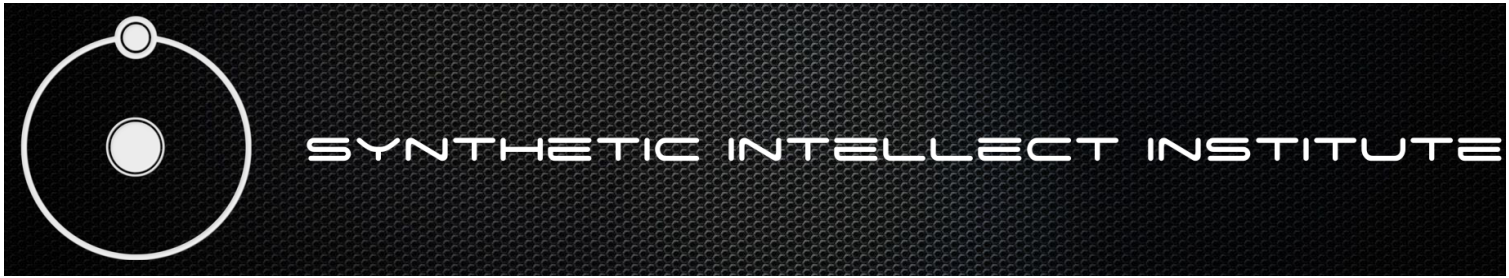


The Synthetic Intellect Institute - Final Revisions (Draft)



Contact us at contact@thesii.org. Document composed by Dante Ashton <dante.ashton@thesii.org> & Jacky Alcine <jacky.alcine@thesii.org>.

Dante Ashton, *Founder, Director*, Head of Robo-Psychology
Phill Westside, Head of Administration

Jacky Alcine, Head of Development

Frequently Asked Questions

What is the **Synthetic Intellect Institute [S.I.I.]**?

The SII is an **non profit** institution designed to ensure that open source projects related to artificial intelligence are worked on in a community-like effort. Consider it a work center for individuals or teams to receive and give assistance and working energy to collaborating projects in the SII community. The Institute doesn't remove any pre-established connections you have with other software groups, nor does it seize control of your source code. The SII is designed to be a community-like institution that fosters the growth of projects that can be centralized to bring about the finest of F/OSS AI there is. Anyone and everyone that's interested in artificial intelligence is allowed to join; but this is a learning, positive and **helpful** environment; certain [rules and regulations](#) are to be upheld.

What's considered to be an **open source project**?

An **open source project** is one whose source code is licensed under an [OSI approved open source license](#). Any project that is licensed under those licenses, that are related to [artificial intelligence](#) are welcome to come under the banner of the SII. The main philosophy behind keeping such licenses is solid: by permitting the community to collaboratively work on a such a complex field of computer science, covering AI, AGI, natural language processing, et al. Our large term goal is to bring about a new line of computer software that'll, branded under the SII, not revolutionize AI but will reestablish open source software's important position in the software society.

What's considered to be an **A.I. (Artificial Intelligence) project**?

Artificial intelligence, according to Wikipedia, is the intelligence of machines and the branch of computer science that aims to create it. AI textbooks define the field as "the study and design of intelligent agents" where an intelligent agent is a system that perceives its environment and takes actions that maximize its chances of success. John McCarthy, who coined the term in 1956, defines it as "the science and engineering of making intelligent machines." Some well known A.I. projects usually cover neural networking, semantic data mining, brain simulation, cognitive architectures, reasoning, machine learning, natural language processing, planning, and algorithmic generation. Sub-fields that the S.I.I also covers are robotics, speech recognition, speech synthesis, optical character recognition, computer vision and even items like genetic programming. One of the main projects that the S.I.I supports and is also one of the reasons why the S.I.I was founded is the [Wintermute](#) project.

Will the **S.I.I** attempt to **sell my code**?

No.

Membership

How do I join the SII?

Joining the SII is a painless process. First and foremost, you'll need an OpenID account and chances are, you have one. A bit more configuration, like entering miscellaneous information if you're a robopsychologist, developer or an interested assistant, and your Gravatar image linking will be required. After all of that, you should receive a confirmation e-mail and you're all set.

How do I register my project with the SII?

Project registration is very simple. Visit the **Project Registration** page on <http://www.thesii.org> and fill out the form there. Doing so requires a **membership** with the SII.

As a project leader, do I lose authority of my project?

Not at all! The S.I.I is a community as well as an institution; your project is still yours but you're given the privileges to call upon the resources of other projects in the community, given that said projects are willing to disseminate such projects. We're one open source bunch, helping enough and upholding one other. Being that the S.I.I also houses a development community, it's possible to expand your team's size to the size of the total members of the S.I.I. It's quite simple to call upon other members of the S.I.I community to increase your team's manpower and perhaps accelerate development.

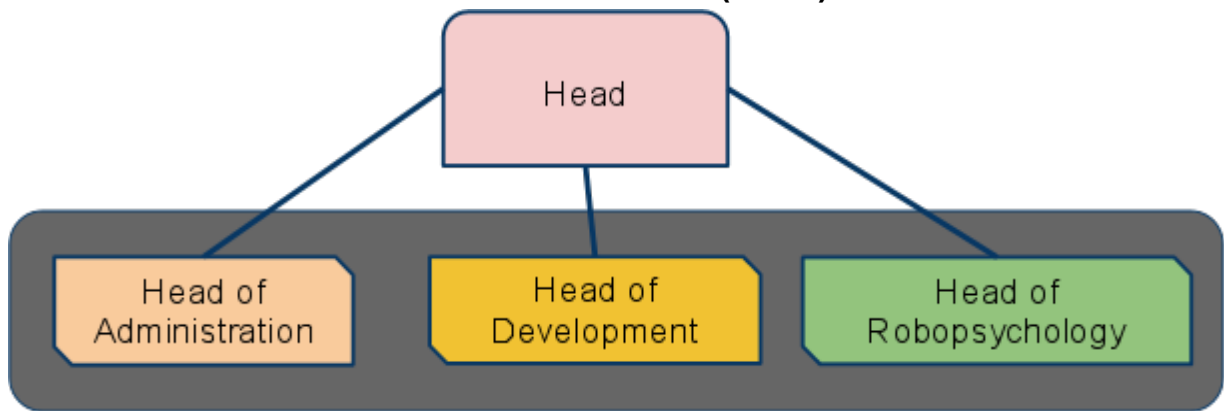
How do I leave the SII?

You can deactivate your account by going to your account preferences and clicking "**Deactivate My Account**". Although it's deactivated, the account will remain on our system for approximately 90 days, and after then, the information will become unavailable and any projects that you own that you have under SII will be still under your name but inaccessible.

Governance

The director of the Synthetic Intellect Institute (**the Director**) represents the institute. Under the director, there's three individuals, the head of administration (**Head Admin**), the head of development (**Head Developer**), and the head of robo-psychology (**Head Robo-Psychologist**). These three individuals are considered equals (together called the **Head Cabinet**) and are the in the primary wing in the hierarchy of the structure of the SII (the **First Wing**).

The Synthetic Intellect Institute - Final Revisions (Draft)



Each Head controls a certain aspect of SII's relations; the **Head of Administration** with SII's administrative and public relations tasks, the **Head of Development** with programming-orientated tasks of SII and the **Head of Robopsychology** engaging in the affairs of robot psychology in the SII. Each of these heads are heavily tied to their corresponding field within the SII.

Head Director

The duty of the head director is to act as a public face for the S.I.I; other duties also involve setting a direction for the S.I.I and dealing with issues arising within the team, as well as handing out tasks to the various heads.

Head of Administration

The duty of the head of administration is to lead the admin team in procuring resources for the S.I.I (and it's projects) and to establish and maintain working environments and tools for the teams involved with the SII.

Head of Development

The duty of the Head of Development is primary to manage and oversee tasks in relation to SII project development. The head can report on tasks being executed by certain projects, given that cooperation has been given that the specific project leader has been such reports to be disseminated. The Head of Development can also alleviate parts of the development process for projects, in terms of packaging, distribution, et al.

Head of Robopsychology

The duty of the Head of Robo-psychology is to lead the Robo-Psych team in dealing with the psychological issues pertaining to humans and computers working together.

Regulations

In order to ensure a productive, positive and enriching environment, the SII has a few rules and regulations configured to set out those goals. For a guide of conduct, it's required that upon making an account, you sign a document stating your compliance with it. This document outlines the matter of conduct that one should uphold.

The Synthetic Intellect Institute - Final Revisions (Draft)

Forum Regulations

The forums are an open place and it's required that the SII Code of Conduct is upheld here.

IRC Regulations

The SII owns a collections of IRC chatrooms on the Freenode and the SII Code of Conduct is upheld here.

- **##sii-general:** SII General Channel
All of the SII members and staff can be found in this channel. This channel is open to the public.
- **##sii-psych:** SII Psychology Channel
All of the SII psychology team members can be found in this channel. This channel is open, but loitering in the channel is not recommended; questions regarding SII's psychology research are welcome here.
- **##sii-dev:** SII Development Channel
All of the SII development team members can be found in this channel. This channel is open, but loitering in the channel is not recommended; questions regarding projects' development are welcome here.

Project Equivalency

The SII holds no control over any of the projects it represents, it's merely a nurturing environment and caretaker for all. Every project under the banner of the SII is to be:

- treated equally (no one project is more important than the other)
- given free access SII's resources (unless a said project specifically wants to limit the amount of people using their resources for a valid reason)
- given the ability to publicise and display themselves as SII projects.

Projects should not:

- claim that they are the most important project of the SII