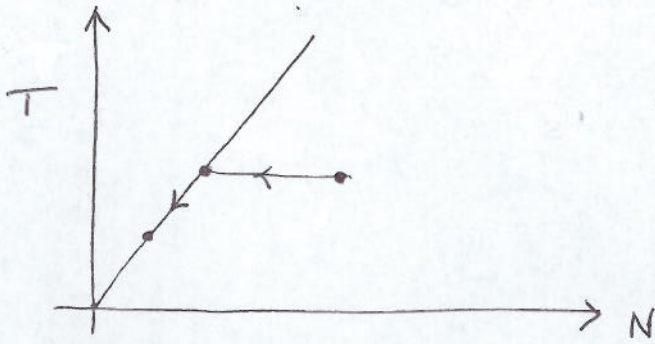


$$F_{max} = \mu N$$



Failure criterion

If  $T = F < \mu N$   
 else if  $T = F > \mu N$

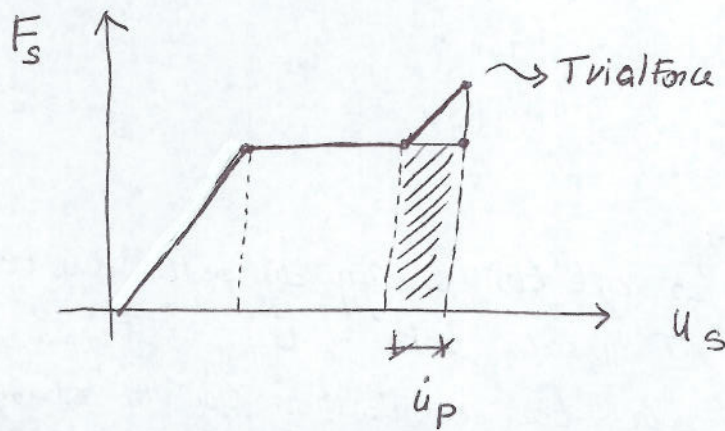
$$u_p = 0$$

$$u_p = u_{TOT} - u_c = u_{TOT} - \frac{\mu N}{K} \quad \text{Total}$$

Incrementally we obtain:

$$\dot{u}_p = \dot{u}_{TOT} - \frac{\mu \dot{N}}{K} \quad \text{Incremental}$$

1 (CASE) if  $\dot{N} = 0 \rightarrow \dot{u}_p = \dot{u}_{TOT}$  (easy)



OK